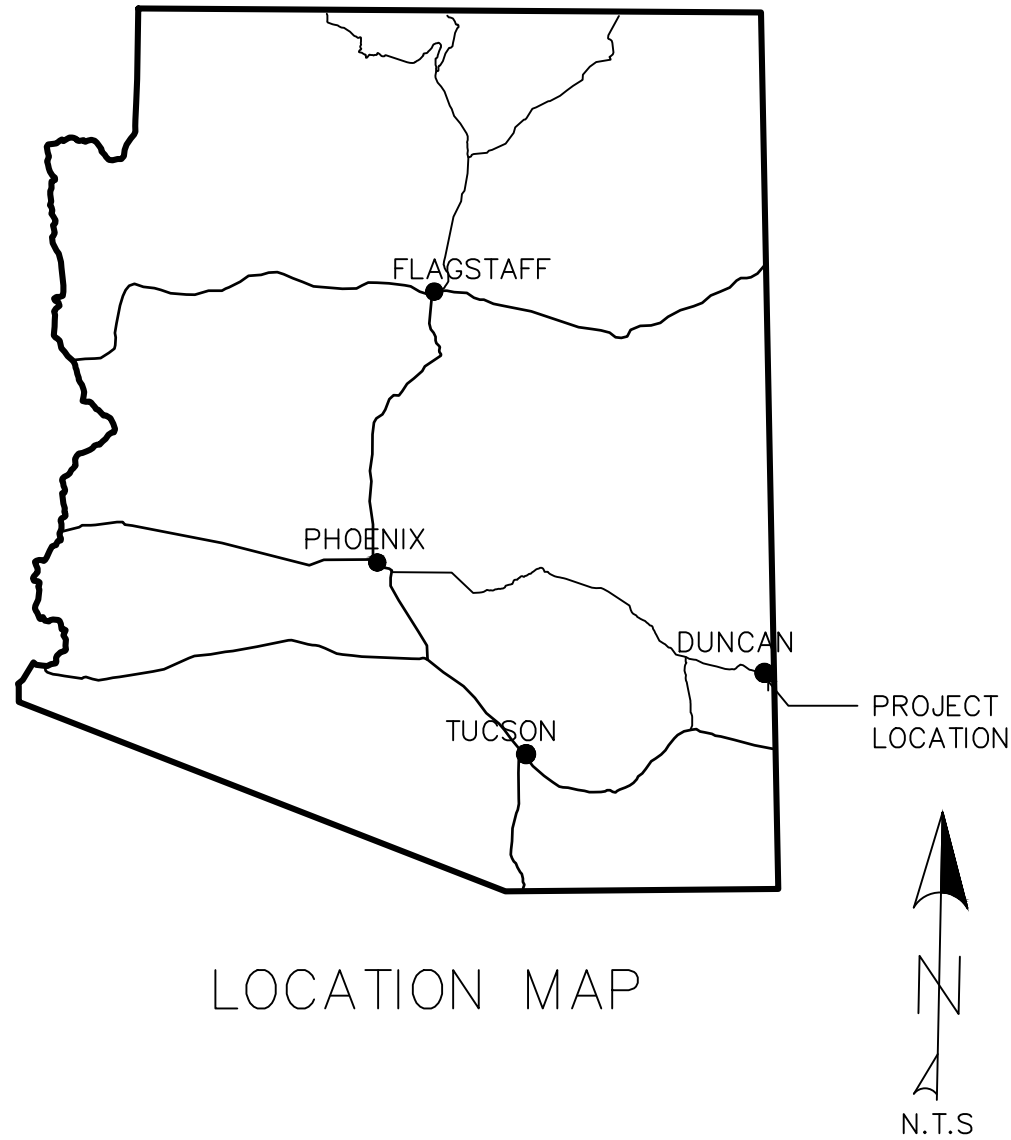


TOWN OF DUNCAN CENTENNIAL/VETERANS PARK PROJECTS

GENERAL NOTES:

- 1 ANY WORK PERFORMED WITHOUT THE APPROVAL OF THE OWNER AND/ OR ALL CONSTRUCTION OR MATERIALS NOT IN CONFORMANCE WITH THESE PLANS ARE SUBJECT TO REMOVAL AND REPLACEMENT AT THE CONTRACTORS EXPENSE.
- 2 CONTRACTOR SHALL ASSUME SOLE RESPONSIBILITY FOR JOB SITE CONDITIONS DURING CONSTRUCTION OF THE PROJECT, INCLUDING SAFETY OF ALL PERSONS AND PROPERTY. THESE JOBSITES ARE LOCATED IN ACTIVE, OPERATING PARKS WITH CHILDREN CONSTANTLY IN THE AREA AND ALL CARE MUST BE TAKEN TO ENSURE PATRON SAFETY. THIS REQUIREMENT SHALL APPLY CONTINUOUSLY AND NOT BE LIMITED TO NORMAL WORKING HOURS. CONTRACTOR SHALL DEFEND, INDEMNIFY, AND HOLD THE OWNER HARMLESS FROM ANY AND ALL LIABILITY, REAL OR ALLEGED, IN CONNECTION WITH THE PERFORMANCE OF WORK ON THIS PROJECT.
- 3 THE LOCATIONS AND COMPLETENESS OF EXISTING UNDERGROUND OR OVERHEAD UTILITIES SHOWN ON THESE PLANS ARE APPROXIMATE ONLY, AND HAVE NOT BEEN INDEPENDENTLY VERIFIED BY THE OWNER. THE CONTRACTOR, AS REQUIRED BY LAW, SHALL CALL BLUE STAKE FOR THE LOCATION OF ALL UNDERGROUND UTILITIES TWO WORKING DAYS BEFORE DIGGING AT EACH LOCATION.
- 4 THE CONTRACTOR SHALL BE RESPONSIBLE FOR REPAIR OR REPLACEMENT OF ANY IMPROVEMENTS OR EXISTING FACILITIES DAMAGED DURING CONSTRUCTION OPERATIONS.
- 5 THE CONTRACTOR SHALL TAKE WHATEVER STEPS NECESSARY TO PREVENT AND CONTROL DUST DUE TO CONSTRUCTION OPERATIONS. DUST CONTROL IS CONSIDERED INCIDENTAL TO THE CONTRACT AND NO ADDITIONAL COMPENSATION SHALL BE MADE.
- 6 THE CONTRACTOR IS RESPONSIBLE FOR VERIFYING ALL QUANTITIES.
- 7 THIS PROJECT WILL NOT BE CONSIDERED COMPLETE UNTIL ALL AREAS IN AND AROUND THE CONSTRUCTION SITE HAVE BEEN CLEANED OF ALL DIRT, DEBRIS, ADHESIVES, ETC.
- 8 ALL CONSTRUCTION METHODS AND MATERIALS SHALL CONFORM TO CURRENT STANDARD DETAILS AND SPECIFICATIONS AS PREPARED BY MARICOPA ASSOCIATION OF GOVERNMENTS (MAG)AND THE TOWN OF DUNCAN REQUIREMENTS.



VICINITY MAP
TOWN OF DUNCAN,AZ

SHEET INDEX

- 1 COVER
- 2 CENTENNIAL PARK
- 3 CENTENNIAL PAVING
- 4 VETERANS PARK
- 5 VETERANS PAVING
- 6 PLAYGROUND SURFACING



No.	Description	Date:

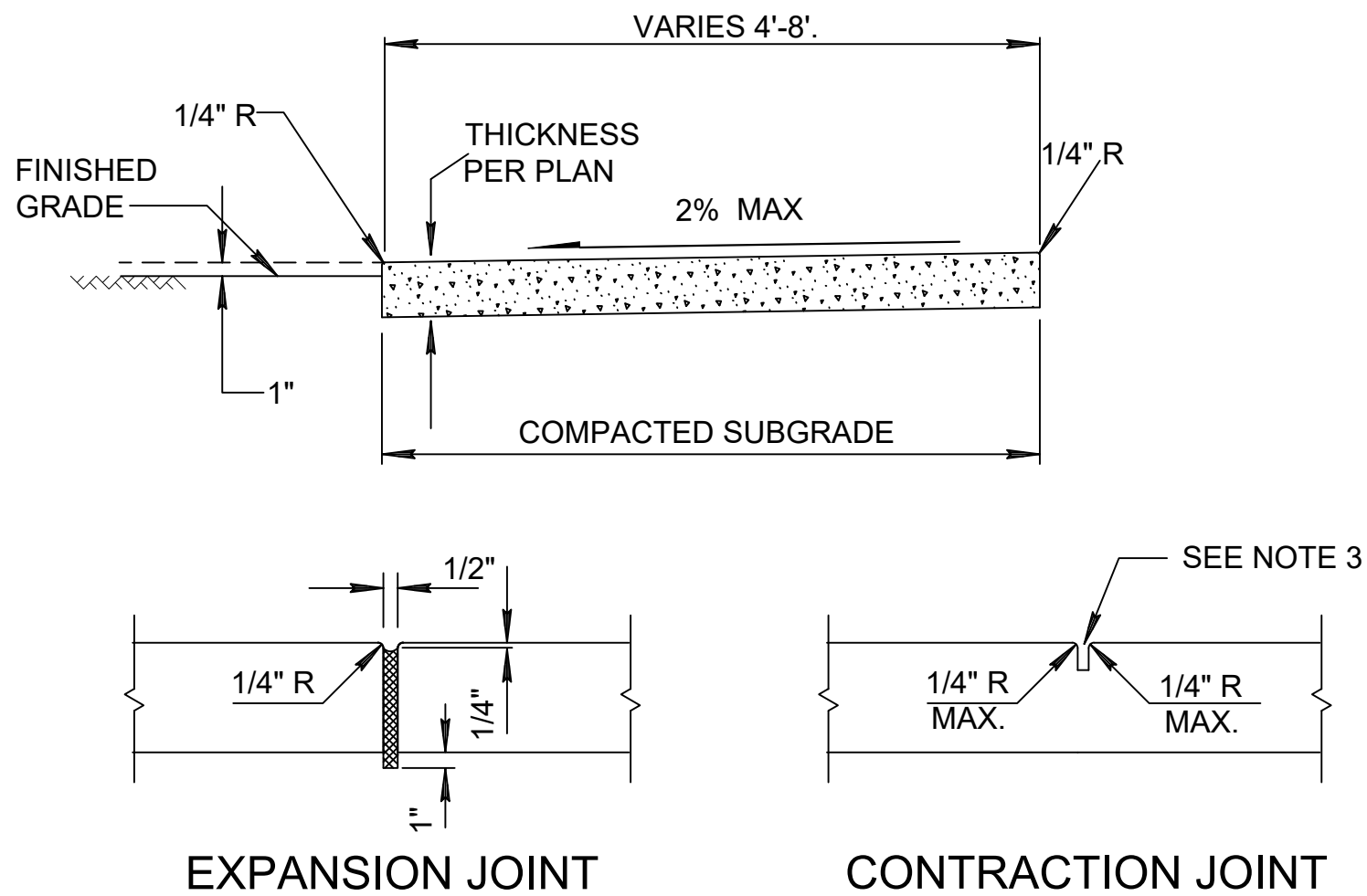
ENGINEERING		Project No.	
		Designed By:	EA
		Drawn By:	EA
		Checked By:	EA
11/4/2024		Location: Section 19, Twn 8 S, Rng 32 E	

CENTENNIAL PARK PROJECT



CONSTRUCTION NOTES:

- 1. REMOVE PORTIONS OF EXISTING SIDEWALK (879 SF)
- 2. INSTALL 4" THICK CONCRETE SIDEWALK IN ACCORDANCE WITH DETAIL A. SIDEWALK ELEVATION TO MATCH AT EXISITNG SIDEWALK CONNECTION POINTS.
- 3. CONSTRUCT 6' TALL 8x8x16" CMU BLOCK WALL. BLOCK WALL SHALL BE 3' TALL WITHIN 25' SETBACK AREA AT SOUTH EAST CORNER. (446 LF)



EXPANSION JOINT CONTRACTION JOINT

NOTES:

- 1. CONCRETE CONSTRUCTION SHALL CONFORM TO MAG STANDARD SPECIFICATIONS SECTION 340.
- 2. EXPANSION JOINTS SHALL BE 1/2" BITUMINOUS TYPE PREFORMED EXPANSION JOINT FILLER, PER MAG SECTION 729.
- 3. LARGE AGGREGATE, IN CONTRACTION JOINT SHALL BE SEPARATED TO A DEPTH OF 1", FINISH DEPTH SHALL BE A MINIMUM OF 3/4".
- 4. EXPANSION JOINTS SHALL CONFORM TO SECTION 340, BE INSTALLED PRIOR TO CONCRETE PLACEMENT.
- 5. CONCRETE SHALL BE CLASS 'B' (2500 PSI) PER MAG SECTION 725.
- 6. ALL SIDEWALK CONSTRUCTION SHALL BE ADA COMPLIANT.

DETAIL A: SIDEWALK
N.T.S.



ENGINEERING		Project No.
Designed By:	EA	
Drawn By:	EA	
Checked By:	EA	Location: Section 19, Twn 8 S, Rng 32 E

No.	Description	Date:

CENTENNIAL PARK
TOWN OF DUNCAN PARKS



CONSTRUCTION NOTES:

1.

REMOVE COMBINATION OF ASPHALT AND SUBBASE MATERIAL TO DEPTH OF 6.5 INCHES. COMPACT SUBGRADE AND INSTALL 4" AB AND 2.5" AC.
2.

INSTALL SINGLE CURB PER MAG STANDARD DETAIL 222 TYPE 'B'. 90 LFT
3.

1.5% CROWNED ROAD DRIVEWAY SECTION UP TO BREAK LINE INCLUDING THICKENED ASPHALT PAVEMENT EDGE PER MAG STANDARD DETAIL 201 TYPE 'A' OR 'B'.
4.

4" SOLID WHITE PAVEMENT STRIPING
5.

INSTALL SALVAGED WHEELSTOPS (6)



ENGINEERING

Designed By: EA

Drawn By: EA

Checked By: EA

Project No.

Location: Section 19, Twn 8 S, Rng 32 E

No.	Description	Date:

CENTENNIAL PAVING

TOWN OF DUNCAN PARKS

Registered Professional Engineer

78357

ERIC

ANGLE

Arizona, U.S.A.

Contact Arizona 811 at least two full working days before you begin excavation

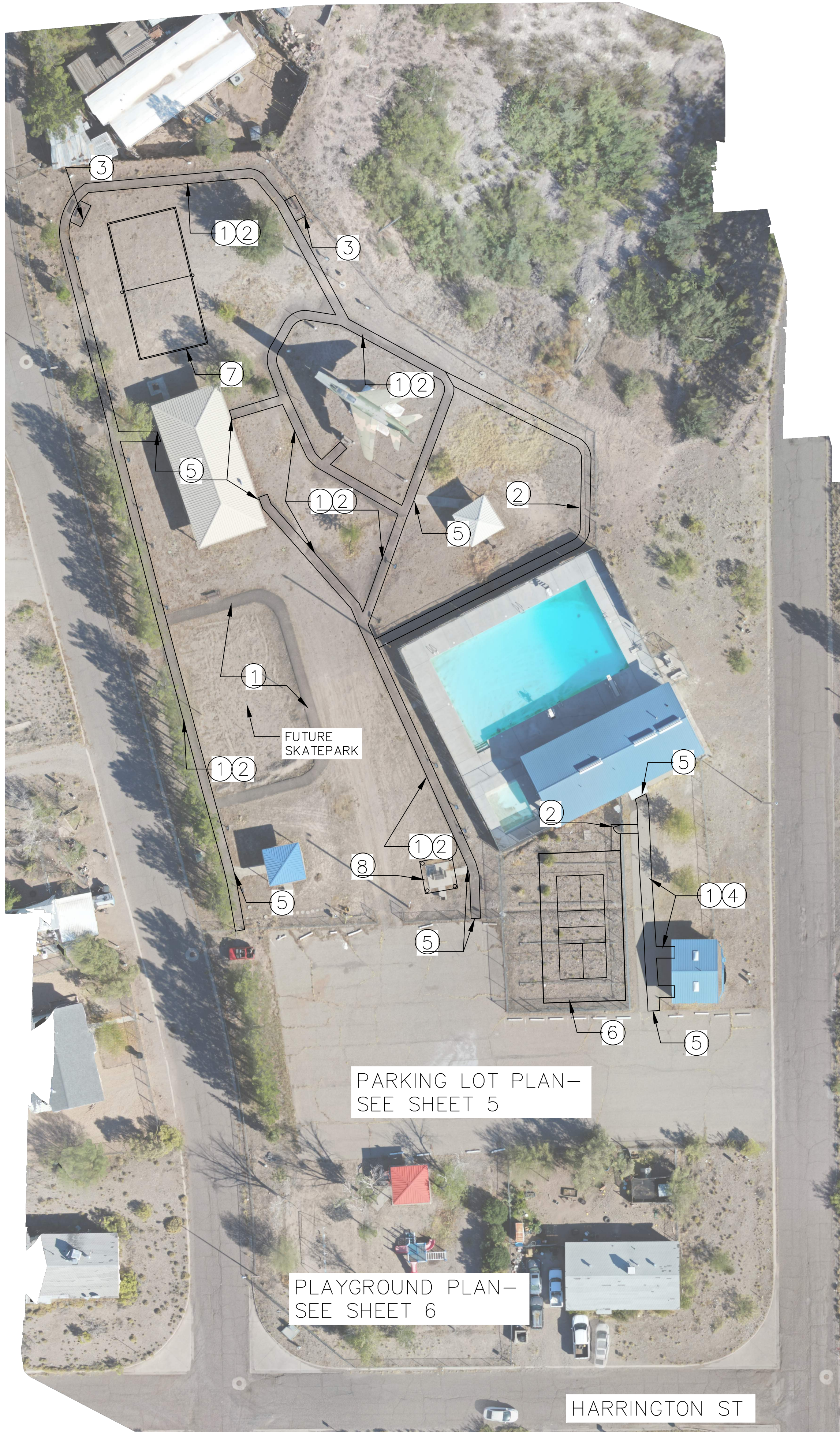
ARIZONA811

Call 811 or click Arizona811.com

SHEET

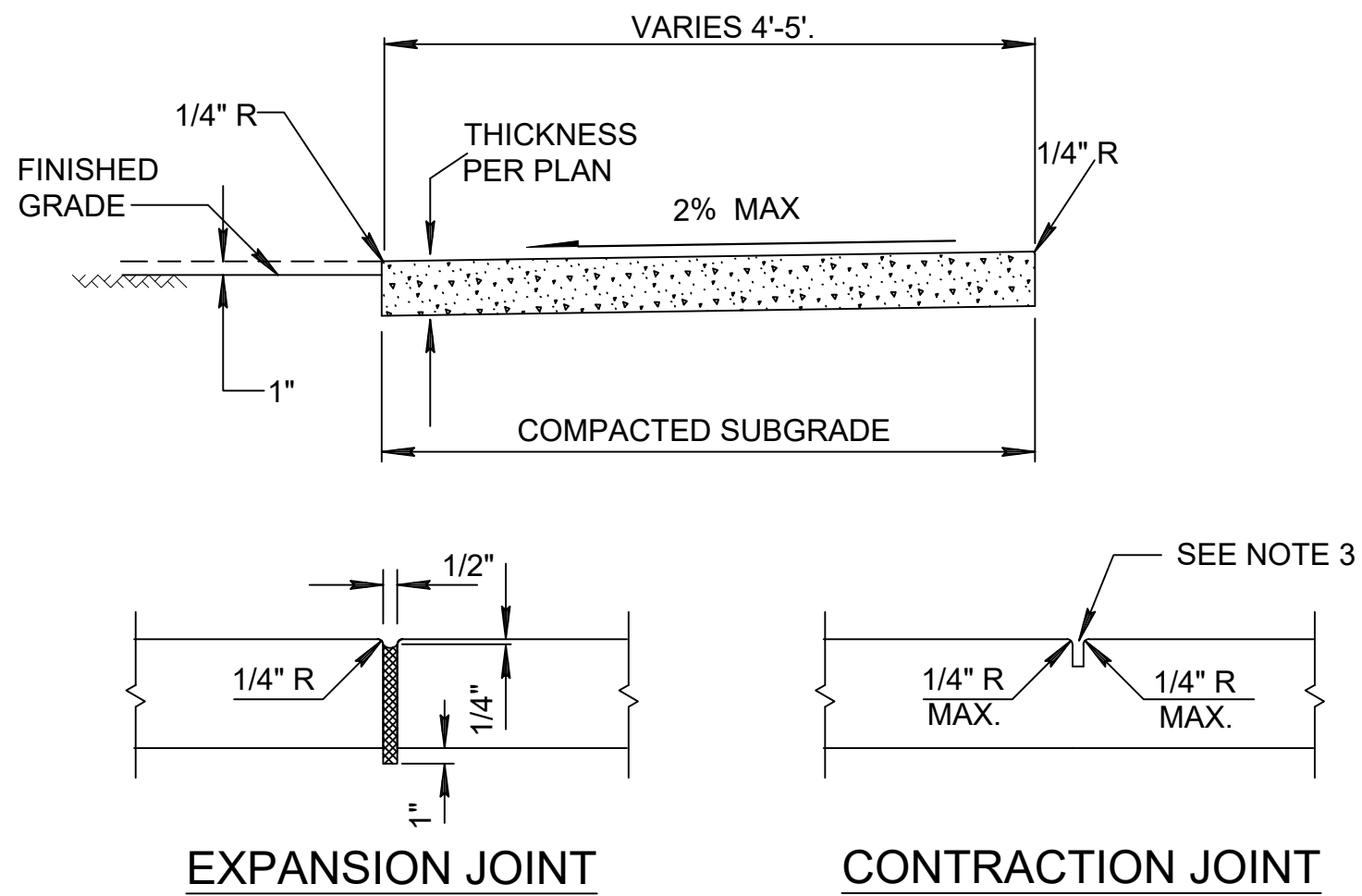
3 of 6

VETERANS PARK PROJECT



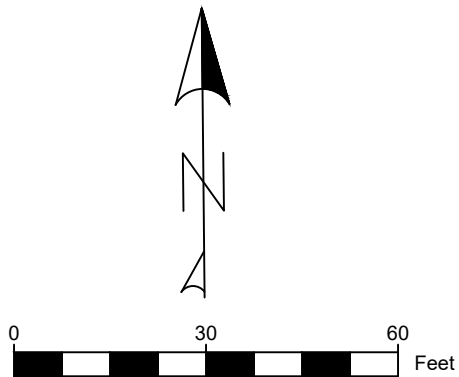
CONSTRUCTION NOTES:

- 1. REMOVE ALL ASPHALT PATHS (7000 SF)
- 2. INSTALL 4" THICK CONCRETE SIDEWALK 4 FT WIDE IN ACCORDANCE WITH DETAIL A. (4955 SF)
- 3. INSTALL 5FT X 10FT CONCRETE PAD FOR BENCH (100 SF)
- 4. INSTALL 4" THICK CONCRETE SIDEWALK 5 FT WIDE IN ACCORDANCE WITH DETAIL A. (533 SF)
- 5. MATCH TOP OF CONCRETE/ PAVEMENT ELEVATION
- 6. INSTALL PICKLEBALL COURT (35FT X 64FT) 4" 3000 PSI CONCRETE WITH 6" TURNDOWN ON 4" COMPACTED ABC. SUBASE AND SUBGRADE TO BE COMPACTED TO 95% OF OPTIMUM COMPACTION. (2240 SF)
- 7. VOLLEYBALL COURT: INSTALL SINGLE CURB PER MAG STANDARD DETAIL 222 TYPE 'B'. 60'X30'(180 LF). FILL WITH 10 INCHES OF SAND.
- 8. INSTALL HIP ROOF METAL SHADE STRUCTURE 14'X14'. MODEL AND COLOR TO BE APPROVED BY TOWN.



- NOTES:
- 1. CONCRETE CONSTRUCTION SHALL CONFORM TO MAG STANDARD SPECIFICATIONS SECTION 340.
 - 2. EXPANSION JOINTS SHALL BE 1/2" BITUMINOUS TYPE PREFORMED EXPANSION JOINT FILLER, PER MAG SECTION 729.
 - 3. LARGE AGGREGATE, IN CONTRACTION JOINT SHALL BE SEPARATED TO A DEPTH OF 1", FINISH DEPTH SHALL BE A MINIMUM OF 3/4".
 - 4. EXPANSION JOINTS SHALL CONFORM TO SECTION 340, BE INSTALLED PRIOR TO CONCRETE PLACEMENT.
 - 5. CONCRETE SHALL BE CLASS 'B' (2500 PSI) PER MAG SECTION 725.
 - 6. ALL SIDEWALK CONSTRUCTION SHALL BE ADA COMPLIANT.

DETAIL A: SIDEWALK
N.T.S.



ENGINEERING		Project No.
Designed By:	EA	Section 19, Twn 8 S, Rng 32 E
Drawn By:	EA	
Checked By:	EA	

No.	Description	Date:

VETERANS PARK
TOWN OF DUNCAN PARKS



CONSTRUCTION NOTES:

1. REMOVE ASPHALT, GRADE AND RECOMPACT SUBBASE
2. INSTALL 3" A.C.
3. INSTALL WHEELSTOPS PER MAG STANDARD DETAIL 150 OR APPROVED EQUAL.
4. 4" SOLID WHITE PAVEMENT STRIPING



LEGEND:

P PROP. PAVEMENT ELV
→ FLOW DIRECTION
TC TOP OF CURB
--- GRADE BREAK

BENCHMARK: TOP SW CORNER OF EXISTING CONCRETE ENTRANCE. ELEVATION = 3753.11 FT

Contact Arizona 811 at least two full working days before you begin excavation

ARIZONA811

Call 811 or click Arizona811.com

ENGINEERING

Designed By: EA
Drawn By: EA
Checked By: EA

Project No.
Location: Section 19, Twn 8 S, Rng 32 E

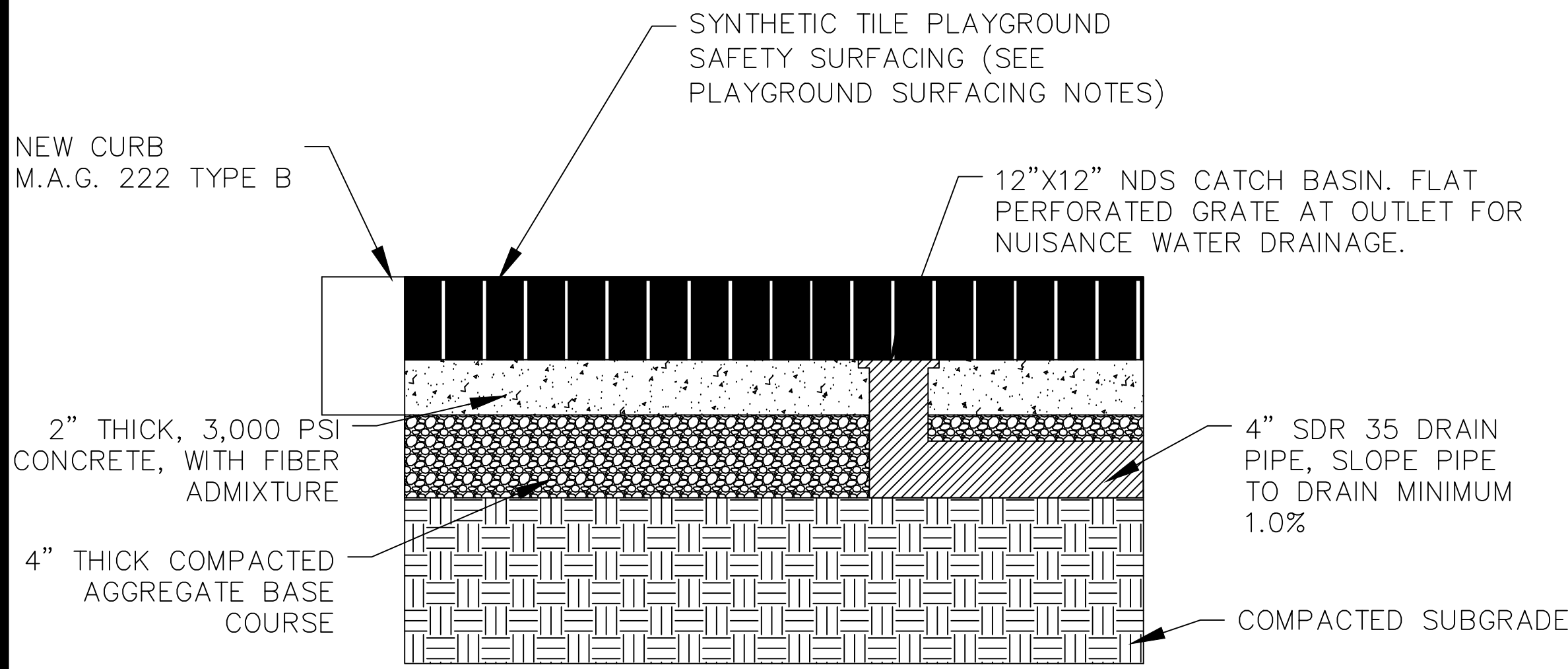
No.	Description	Date:

VETERANS PAVING

TOWN OF DUNCAN PARKS

Registered Professional Engineer
CERTIFICATE NO. 78357
ERIC ANGLE
Date Signed: 11/15/2024
ARIZONA, U.S.A.

5 of 6



NOTES:

- 1 TILE COLORS AND PATTERNS TO BE APPROVED BY OWNER PRIOR TO INSTALLATION.
- 2 THICKNESS OF PLAYGROUND SAFETY SURFACING TILES TO BE DETERMINED BY TILE SUPPLIER, BASED ON PLAYGROUND CRITICAL FALL HEIGHT.

DETAIL B- PLAYGROUND SURFACING
(N.T.S.)

PLAYGROUND SAFETY SURFACING NOTES:

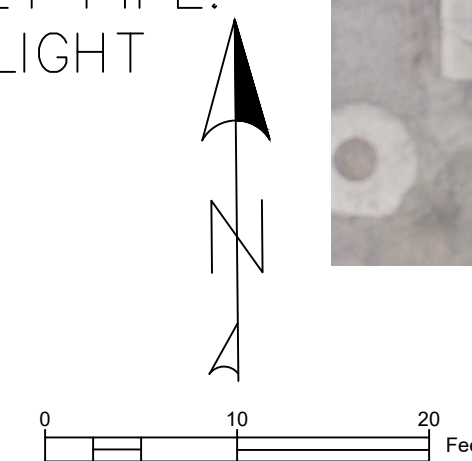
- 1 THE CONTRACTOR SHALL BE REQUIRED TO SUBMIT THE FOLLOWING PRIOR TO BEGIN CONSTRUCTION:
-PRODUCT DATA FOR EACH TYPE OF PRODUCT, INCLUDING INSTALLATION AND SUBSURFACE INSTRUCTIONS.
-SHOP DRAWINGS FOR EACH TYPE OF PROTECTIVE SURFACING INCLUDING PLANS, SECTIONS, PLACEMENT DETAILS, AND ATTACHMENT TO SUBSTRATES. ACCESSORIES AND EDGE TERMINATIONS, PATTERNS MADE BY VARYING COLORS OF SURFACING AND DETAILS OF GRAPHICS. FALL HEIGHTS USED IN DETERMINING REQUIRED TILE THICKNESS.
-ONE FULL MANUFACTURER'S SAMPLE OF TILE, SHOWING PRODUCT/COLOR AND TEXTURE SPECIFIED.
- 2 THE CONTRACTOR SHALL BE REQUIRED TO SUBMIT MATERIAL CERTIFICATES, PRODUCT CERTIFICATES, TEST REPORTS, WARRANTY INFORMATION, AND MAINTENANCE AND CLEANING INSTRUCTIONS.
- 3 MANUFACTURER AND INSTALLER AGREE TO REPAIR OR REPLACE COMPONENTS OF PROTECTIVE SURFACING THAT FAIL IN MATERIALS OR WORKMANSHIP WITHIN SPECIFIED WARRANTY PERIOD. PLAYGROUND SAFETY SURFACING TILES SHALL BE WARRANTED FOR DEFECTS IN MATERIALS AND WORKMANSHIP FOR 10 YEARS FROM DATE OF COMPLETED INSTALLATION. WARRANTY WILL INCLUDE ANCILLARY COSTS ASSOCIATED WITH SHIPPING REPLACEMENT MATERIALS TO THE THE PROJECT, AND ALL LABOR & COSTS INVOLVED IN THE REPLACEMENT INCIDENT.
- 4 PLAYGROUND SAFETY SURFACING TILES SHALL MEET PERFORMANCE REQUIREMENTS ESTABLISHED BY ASTM, INCLUDING IMPACT ATTENUATION, CRITICAL FALL HEIGHT TESTED ACCORDING TO ASTM F 1292, AND ACCESSIBILITY STANDARD, MINIMUM SURFACING PERFORMANCE ACCORDING TO ASTM F 1951.
- 5 CONTRACTOR SHALL PREPARE SUBSTRATES TO RECEIVE SURFACING PRODUCTS ACCORDING TO PROTECTIVE SURFACING MANUFACTURER'S WRITTEN INSTRUCTIONS TO ENSURE PROPER SLOPE, SUPPORT AND DRAINAGE FOR SAFETY SURFACING. REPAIR HOLES OR DEPRESSIONS IN SURFACE WITH LEVELING AND PATCHING MATERIAL. INSTALL UNDERDRAIN SYSTEM AS INDICATED ON DRAWINGS.
- 6 APPLY ADHESIVE AND TILE SUPPORT ELEMENTS IN ACCORDANCE WITH MANUFACTURER'S INSTRUCTIONS REGARDING ALL ASPECTS OF INSTALLATION OF TILES.
- 7 CONTRACTOR SHALL PROTECT PLAYGROUND SAFETY SURFACING TILES FROM FOOT TRAFFIC FOR A MINIMUM OF 12 HOURS AFTER INSTALLATION AND PROTECT COMPLETED TILES FROM DAMAGE DURING CONSTRUCTION.

CENTENNIAL PLAYGROUND

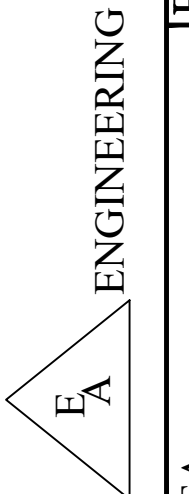


CONSTRUCTION NOTES:

1. REMOVE EXISTING CURB (140 LF)
2. REMOVE AND REPLACE PLAYGROUND EQUIPMENT PER OWNER SPECIFICATIONS. SWING SETS TO REMAIN.
3. INSTALL METAL SHADE STRUCTURE 30'X35' BY MULLER OR SIMILAR. STYLE AND COLOR TO BE APPROVED BY TOWN.
4. INSTALL CURB PER MAG STANDARD DETAIL 222 TYPE 'B'.
5. INSTALL COMPACTED AB, CONCRETE FLOOR, SYNTHETIC TILE PLAYGROUND SAFETY SURFACING IN ACCORDANCE WITH DETAIL B. CONCRETE FLOOR TO BE GENTLY SLOPED TO DRAIN GRATE. SLOPES NOT TO EXCEED 1%.
6. INSTALL 4" SDR 35 DRAIN PIPE PER DETAIL B. INSTALL 12"X12" NDS CATCH BASIN UNDER TILES. FLAT PERFORATED GRATE TO BE AFFIXED ON OUTLET PIPE. EXCAVATE END OF PIPE TO DAYLIGHT FOR POSITIVE DRAINAGE.



VETERANS PLAYGROUND



ENGINEERING
Project No.
EA
EA
EA
Location: Section 19, Twn 8 S, Rng 32 E

No.	Description	Date:

PLAYGROUND SURFACING

TOWN OF DUNCAN PARKS

